

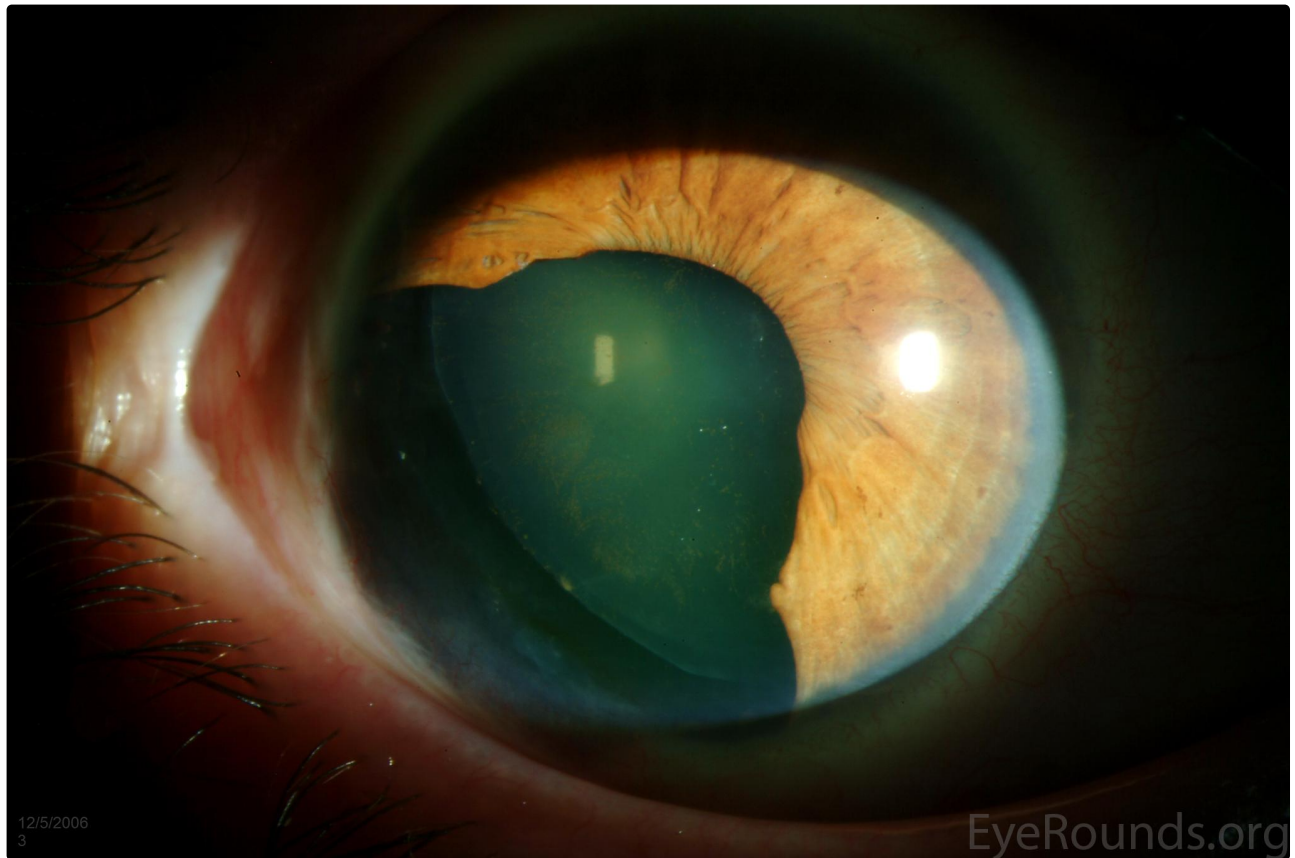
Ophtec 311 iris reconstruction intraocular lens after iris melanoma resection

Category(ies): Cornea

Contributor: [Jesse Vislisel, MD](#)

Photographer: Tracy Aly, CRA

The Ophtec 311 intraocular lens implant features a colored body and haptics to simulate the appearance of an iris. These photographs show the pre- and post-operative appearance of a patient with a large iris defect after resection of an iris melanoma who subsequently underwent cataract extraction and implantation of an Ophtec 311 lens.



 Enlarge

 Download

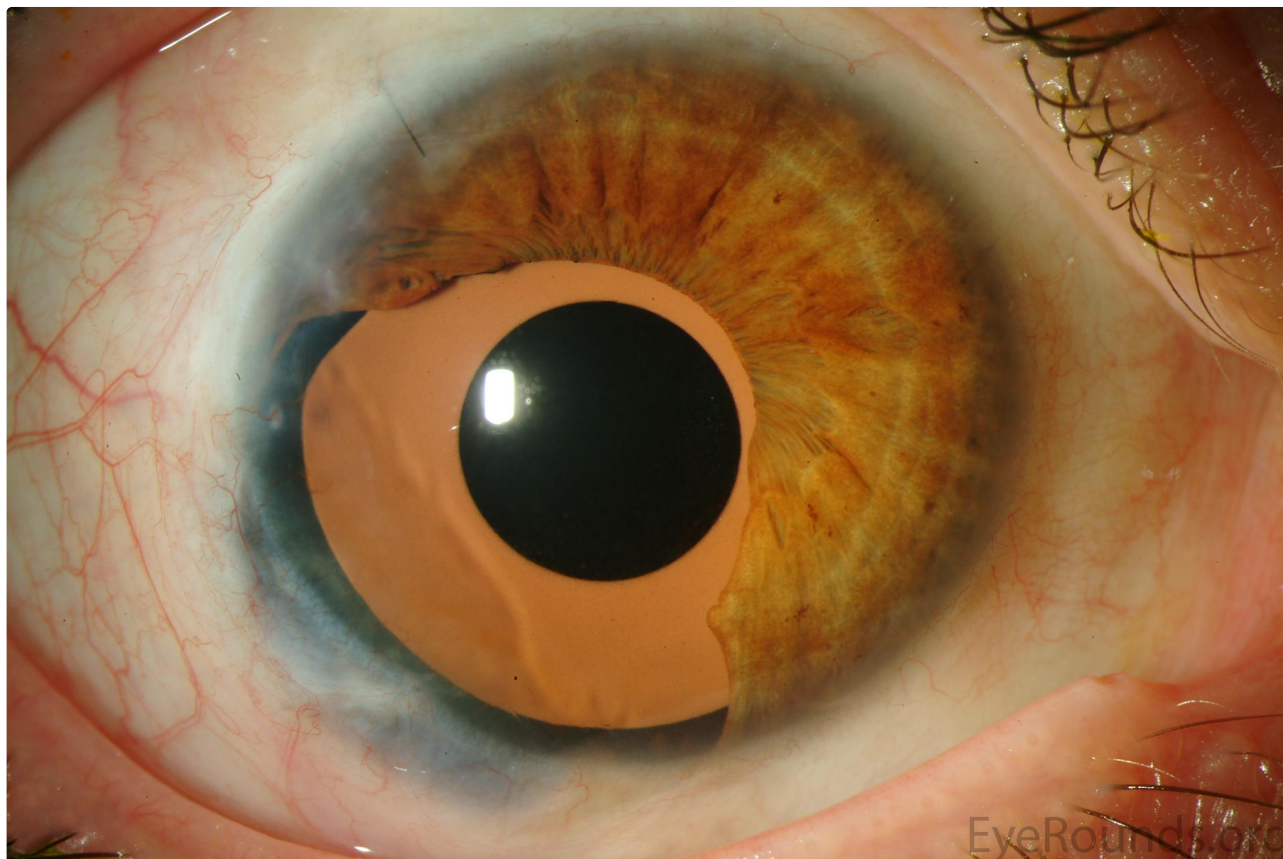
[Enlarge](#)[Download](#)

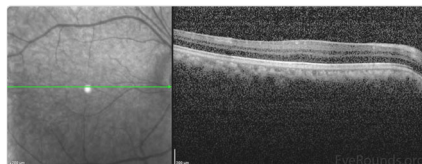
Image Permissions:



Ophthalmic Atlas Images by EyeRounds.org, The University of Iowa are licensed under a [Creative Commons Attribution-NonCommercial-NoDerivs 3.0 Unported License](http://creativecommons.org/licenses/by-nc-nd/3.0/).



Related Articles



[Related Case: Aniridia](#)

Address

University of Iowa
Roy J. and Lucille A. Carver College
of Medicine
Department of Ophthalmology and
Visual Sciences
200 Hawkins Drive
Iowa City, IA 52242

[Support Us](#)

Legal

Copyright © 2019 The University of
Iowa. All Rights Reserved
[Report an issue with this page](#)
[Web Privacy Policy](#) |
[Nondiscrimination Statement](#)

Related Links

[Cataract Surgery for Greenhorns](#)
[EyeTransillumination](#)
[Gonioscopy.org](#)
[Iowa Glaucoma Curriculum](#)
[Iowa Wet Lab](#)
[Patient Information](#)
[Stone Rounds](#)
[The Best Hits Bookshelf](#)

EyeRounds Social Media

Follow



Receive notification of new cases,
[sign up here](#)
[Contact Us](#)
[Submit a Suggestion](#)